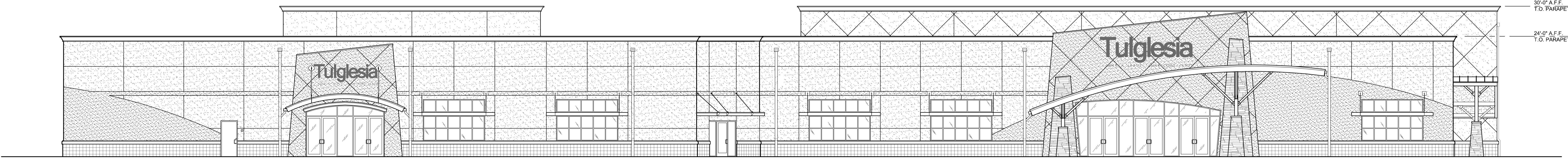


4051,60 MT2 PLANO DE CAMPUS
 CAPACIDAD DE SILLAS = 1147 (80% = 918)
 OCUPACION TOTAL DE AREA MINISTERIO = 1493
 PARQUEO RECOMENDADO = 500 ESPACIOS

	AREA	% DEL TOTAL
AUDITORIO	1111.30 MT2	27%
LOBBY	937 MT2	23%
NIÑOS	764 MT2	19%
OFICINAS	200 MT2	5%
OTROS	1040 MT2	26%

FLOOR PLAN
 ESCALA: 1/8" = 1'-0"



ELEVATION
 SCALE: 1/8" = 1'-0"

Revisions:	Date:	Seal:	Architect:	Mechanical Engineer:	Structural Engineer:	Civil Engineer:	Project Title:	Date:	Drawing NO.:
1 2 3 4 5 6 7 8							43,611 S.F. FACILITY PLAN		
				Electrical Engineer:					